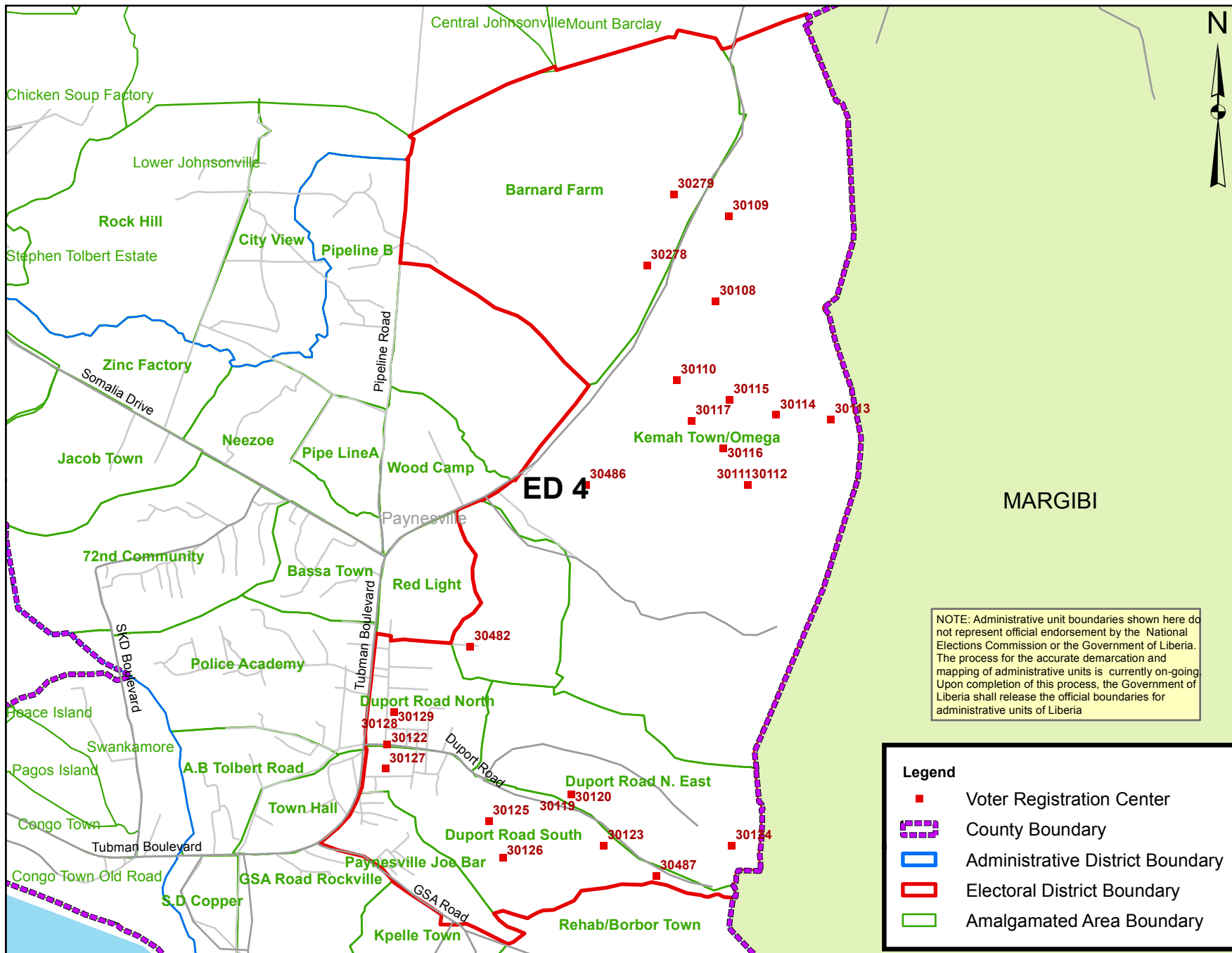


# Montserrado County Electoral District No.4 2017



Voter Registration Centers		
VRC Code	Center Name	Total Registrants
30108	Christian Home Ministries Church Int'l	1,977
30109	Omega Community Christian Academy	2,347
30110	Brighter Day Preparatory School	3,236
30111	Soul Clinic Mission/Maggie Lampkins Institute	1,832
30112	Soul Clinic Mission/Maggie Lampkins Institute	2,623
30113	Kingdom Foundation Institute	2,296
30114	St. Samuel Elem. & Jr. High School	3,154
30115	S. Patrick Jallah School	2,696
30116	Tomorrow People Foundation	2,143
30117	Sammy M. Dukuly School	1,787
30119	Seymour Grann School	2,641
30120	Seymour Grann School	2,597
30122	Rik-C Day Care, Nursery & Pre-School	2,315
30123	Dave R. Inman Int'l School	2,286
30124	Zinah Foundation School	1,523
30125	Stronger Hope Central Academy	3,539
30126	Rev. Mother Sarah School System	3,664
30127	William Bean Institute/World Wide	2,657
30128	Nathan E. Gibson School	2,848
30129	Nathan E. Gibson School	2,200
30278	Whein Town Public School	3,181
30279	Charles F. Caine School	3,691
30482	New Hope Foundation Academy	3,736
30486	Morris' Farm Public School	1,746
30487	One Family Christian Center	1,071
<b>Total Registrants (After Exhibition)</b>		<b>63,786</b>

NOTE: Administrative unit boundaries shown here do not represent official endorsement by the National Elections Commission or the Government of Liberia. The process for the accurate demarcation and mapping of administrative units is currently on-going. Upon completion of this process, the Government of Liberia shall release the official boundaries for administrative units of Liberia

**Legend**

- Voter Registration Center
- ▭ County Boundary
- ▭ Administrative District Boundary
- ▭ Electoral District Boundary
- ▭ Amalgamated Area Boundary

Voter registration centers have been assigned to electoral districts. Therefore, a person is assigned to the same electoral district of the center where he or she registered.

The final roll of registrants (after the Exhibition Exercise) is displayed.

Data Sources:  
 2017 National Voter Registration Exercise- National Elections Commission  
 2009-2010 Administrative Boundary & Locality Revalidation Project - Inter-Agency Taskforce on Delimitation (IATD: MIA, MLME, NEC, LISGIS)  
 2007 National Geographic Planning - Liberia Institute of Statistics & Geo-Information Services (LISGIS)  
 2006-2007 Boundary Harmonization Exercise - Special Joint Stakeholders Collaborative Committee (SJSCC)



Scale: 1:54,000  
 Map Projection: UTM Zone 29N  
 Datum: WGS 84  
 Unit: Meter



Prepared & Printed By:  
 National Elections Commission  
 Production Date: 20 June 2017