

# Montserrado County Electoral District No.11 2017

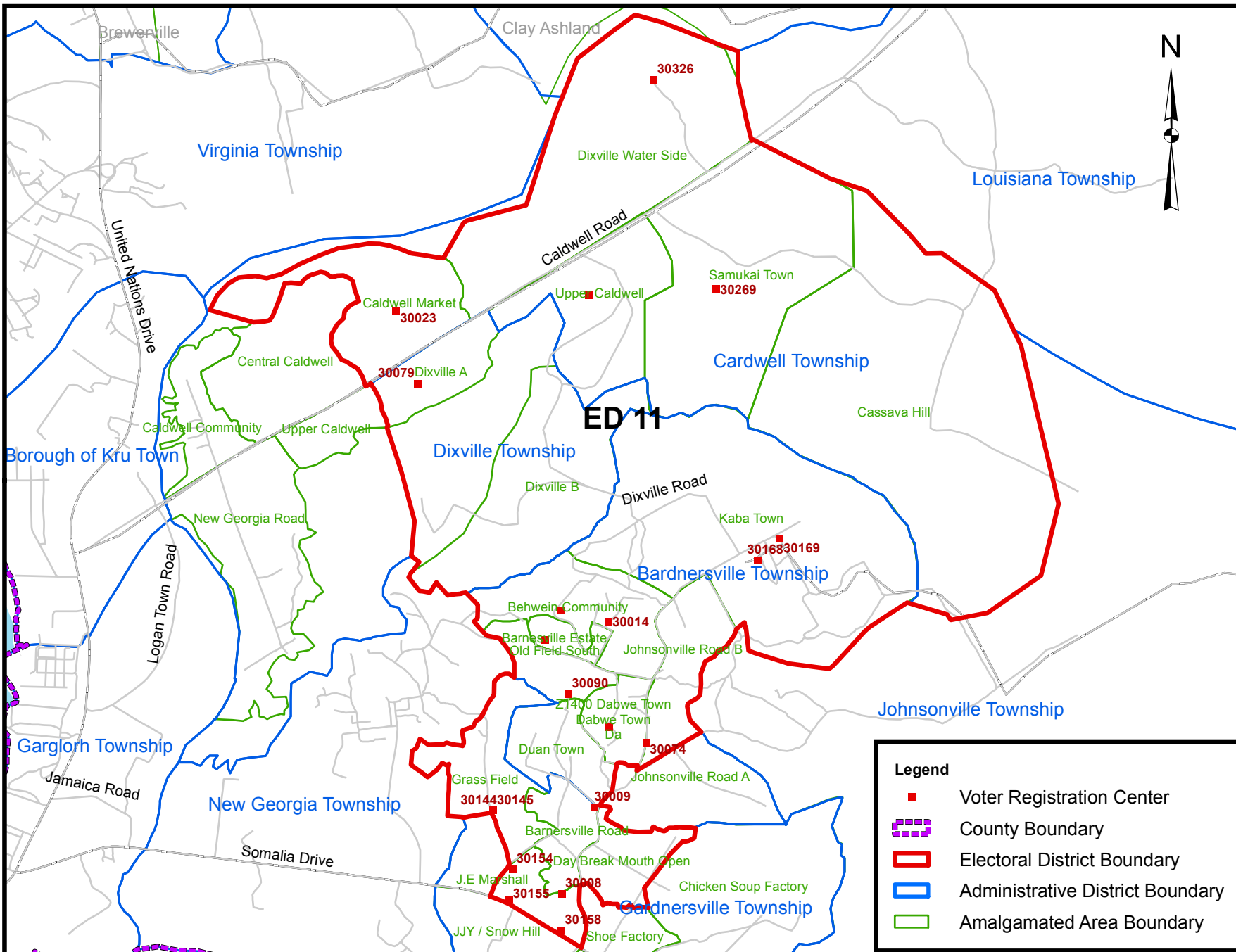


Voter Registration Centers		
VRC Code	Center Name	Total Registrants
30006	E. Jonathan Goodridge School	2,797
30007	E. Jonathan Goodridge School	2,151
30008	Gardnersville Town Hall	2,646
30009	Step of Faith Academy	2,156
30013	Bardnersville Community Institute	1,471
30014	Shirley Kolmer Catholic School	1,892
30023	Zion AGM School	3,004
30073	Bardnesville Public School	2,407
30074	(J & M) Jerbo & Martha Jr. High School	1,987
30079	Dixville Public School	2,053
30090	Grace Baptist Church School	2,517
30144	Lombardia International School System	1,000
30145	Lombardia International School System	671
30154	Duja School	963
30155	Jimmy Jolocon School	1,611
30158	Seku Ibrahim Sheriff Elem. & Jr. High Sch	808
30168	Bardnersville Town Hall	3,164
30169	New Life Christian Academy	2,963
30269	Upper Caldwell Community School	2,279
30326	E.T.M.I School	2,035
30449	Caldwell Bonpo Market	2,607
30451	Reggie Thomas Academy	1,407
<b>Total Registrants (After Exhibition)</b>		<b>44,589</b>

Voter registration centers have been assigned to electoral districts. Therefore a person is assigned to the same electoral district of the center where he or she registered.

The final roll of registrants (after the Exhibition Exercise) is displayed.

NOTE: Administrative unit boundaries shown here do not represent official endorsement by the National Elections Commission or the Government of Liberia. The process for the accurate demarcation and mapping of administrative units is currently on-going. Upon completion of this process, the Government of Liberia shall release the official boundaries for administrative units of Liberia



**Legend**

- Voter Registration Center
- County Boundary
- Electoral District Boundary
- Administrative District Boundary
- Amalgamated Area Boundary

Data Sources:  
 2017 National Voter Registration Exercise- National Elections Commission  
 2009-2010 Administrative Boundary & Locality Revalidation Project - Inter-Agency Taskforce on Delimitation (IATD: MIA, MLME, NEC, LISGIS)  
 2007 National Geographic Planning - Liberia Institute of Statistics & Geo-Information Services (LISGIS)  
 2006-2007 Boundary Harmonization Exercise - Special Joint Stakeholders Collaborative Committee (SJSCC)



Scale: 1:57,000  
 Map Projection: UTM Zone 29N  
 Datum: WGS 84  
 Unit: Meter



Prepared & Printed By:  
 National Elections Commission  
 Production Date: 20 June 2017