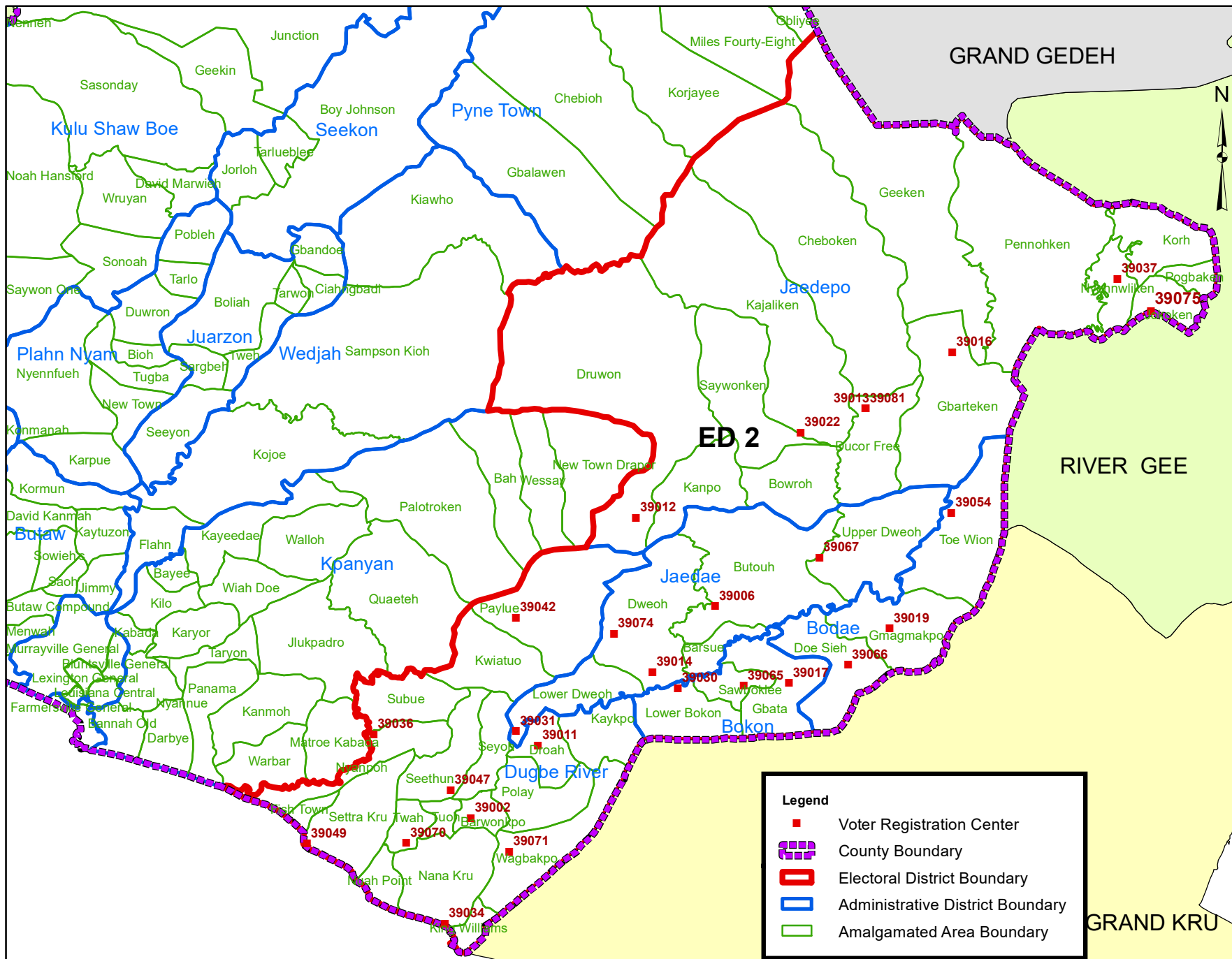


# Sinoe County Electoral District No.2 2020



Voter Registration Centers		
VRC Code	Center Name	Total Registrants
39002	Kunwiah Palava Hut	281
39006	Tuzonburg Public School	1031
39011	Karuekpo Palava Hut	1816
39012	Solomon Jarbo Jr. High School	609
39013	Ducor Free Public School	837
39014	Joplokpo Palava Hut	263
39016	Gbarteken Public School	486
39017	Old Government Camp Palava Hut	2727
39019	Gmagmakpo Palava Hut	664
39022	Kajaliken Public School	445
39030	Diyanakpo Palava Hut	1341
39031	Titiyen Public School	640
39034	Nana Kru Palava Hut	609
39036	Kwitatuzon Palava Hut	815
39037	Saygbeken Public School	1053
39042	Kwiatuo Juaryen Palava Hut	794
39047	Sethum Juaryen Public School	847
39049	Setta Kru Palava Hut	692
39054	Jarpuken Public School	435
39065	Sunshine Town Hall	739
39066	Bala Camp Club Hall	593
39067	Dordroken Public School	239
39070	Twah Community School	191
39071	Gmakenkpo Town Palava Hut	558
39074	Sackor Village Palava Hut	358
39075	Jokoken Elementary School	479
39081	Bleweeya Public School	248
<b>Total Registrants (After Exhibition)</b>		<b>19,790</b>

Voter registration centers have been assigned to electoral districts. Therefore, a person is assigned to the same electoral district of the center where he or she registered.

The final roll of registrants (after the Exhibition Exercise) is displayed.

NOTE: Administrative unit boundaries shown here do not represent official endorsement by the National Elections Commission or the Government of Liberia. The process for the accurate demarcation and mapping of administrative units is currently on-going. Upon completion of this process, the Government of Liberia shall release the official boundaries for administrative units of Liberia.

**Legend**

- Voter Registration Center
- County Boundary
- Electoral District Boundary
- Administrative District Boundary
- Amalgamated Area Boundary

Data Sources:  
 2017 National Voter Registration Exercise- National Elections Commission  
 2009-2010 Administrative Boundary & Locality Revalidation Project - Inter-Agency Taskforce on Delimitation (IATD: MIA, MLME, NEC, LISGIS)  
 2007 National Geographic Planning - Liberia Institute of Statistics & Geo-Information Services (LISGIS)  
 2006-2007 Boundary Harmonization Exercise - Special Joint Stakeholders Collaborative Committee (SJSCC)

Scale: 1:500,000  
 Map Projection: UTM Zone 29N  
 Datum: WGS 84  
 Unit: Meter



Prepared & Printed By:  
 National Elections Commission GIS Section  
 Production Date: 29 November 2020

