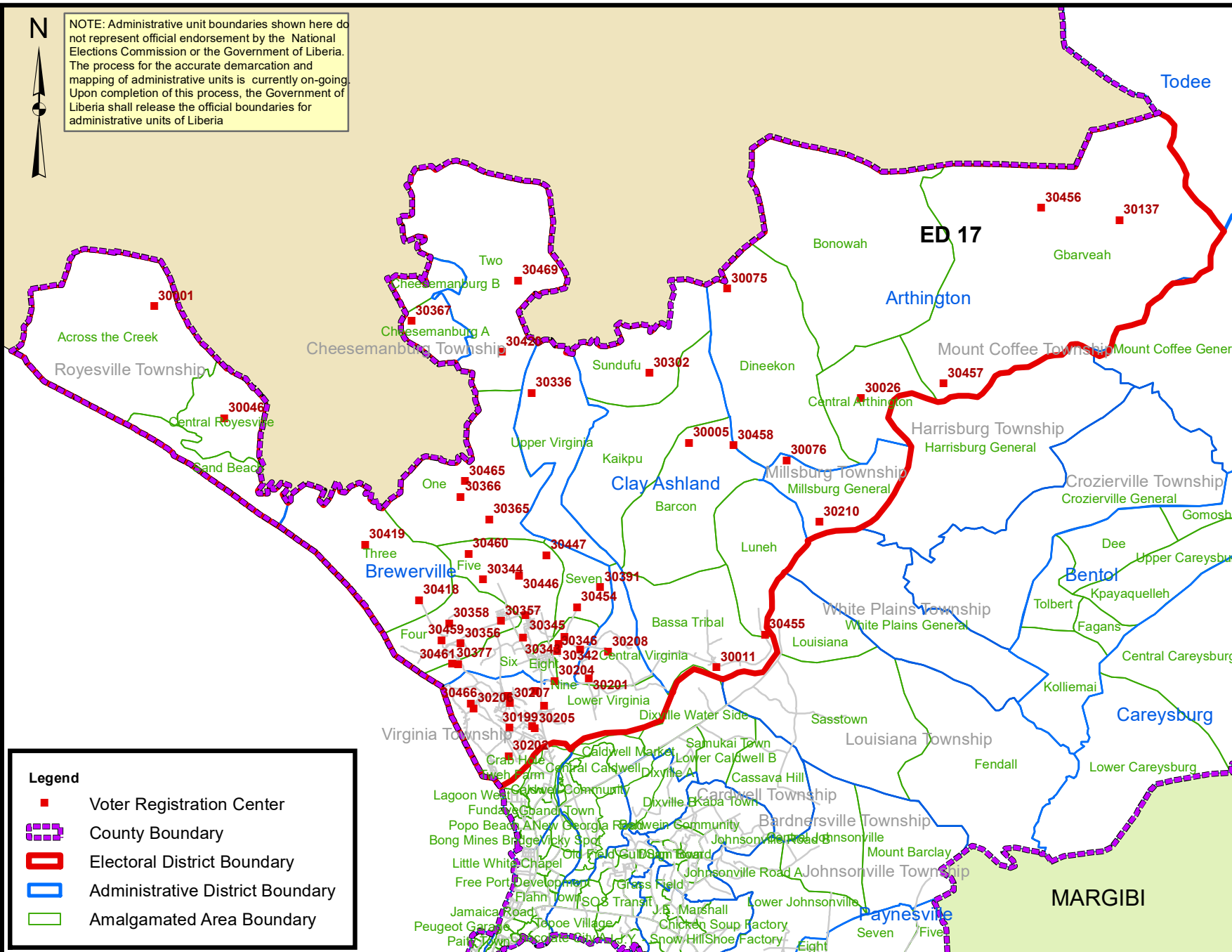




NOTE: Administrative unit boundaries shown here do not represent official endorsement by the National Elections Commission or the Government of Liberia. The process for the accurate demarcation and mapping of administrative units is currently on-going. Upon completion of this process, the Government of Liberia shall release the official boundaries for administrative units of Liberia

Montserrado County Electoral District No.17 2020



Voter Registration Centers		
VRC Code	Center Name	Total Registrants
30001	Blahn Public School	272
30005	Komah Public School	300
30011	W.D. Coleman High School	559
30026	Arthington Public School	581
30046	Royesville Public School	581
30075	Neekon Public School	338
30076	Samia Public School	334
30137	Jallahah Public School	298
30198	Sarah Barclay Public School	2,193
30199	Virginia Christian Academy	2,002
30200	Banjour Public School Center	3,270
30201	Virginia Public School	1,619
30202	Banjour United Community Center	1,947
30203	Pamela Kay Elem. & Jr. High School	2,633
30204	Mango Town Clinic	2,410
30205	Gbarthead Palava Hut	1,716
30206	Goyee Jr. High School	554
30207	FAWE School of Excellence	2,128
30208	Bamboo Town Public School	579
30210	Millsburg Community Center	373
30302	Allieu Swaray Public School	438
30336	Gbondoi Public School	298
30341	Wesleyan School	636
30342	Zunah Town Public School	184
30343	A.G.M. Bible College	2,848
30344	Madison Public School	2,322
30345	Isaac Tomdo Public School	2,792
30346	Old Trump Church Mission School	1,660
30356	Kpallah Public School	2,666
30357	Atherin School	2,274
30358	Bamasee Public School	1,462
30365	Ricks Institute	925
30366	Billey Town Public School	690
30367	Cheesemanburg Elem. & Jr. High School	682
30377	Lott Carey Mission School	3,682
30391	Kubono Public School	507
30418	Sawegbah Public School	445
30419	Kperfor Public School	480
30420	Gandema Public School	274
30442	Esther Yalartai Academy	1,738
30446	Diana E. Davies School System	1,253
30447	NASSCORP Village Palava Hut	711
30454	Brum Camp Community Palava Hut	716
30455	New Apostolic Church	266
30456	Gbolelee Town Public School	434
30457	Zakamah Field Community Palava Hut	409
30458	New Apostolic Church	340
30459	VOA Academy Elementary Junior & Senior High School	1,686
30460	J. Dwalu Kimber School	1,063
30461	Kahatani Islamic Mission	574
30462	Virginia A.G.M. School	1,265
30465	Kamara Town Palava Hut	1,047
30466	Banjour Central High School	1,154
30469	Neezoe Town Palava Hut	209
30474	B. J. Fahnbulleh Memorial School	1,224
Total Registrants (After Exhibition)		64,041

Legend

- Voter Registration Center
- County Boundary
- Electoral District Boundary
- Administrative District Boundary
- Amalgamated Area Boundary

Voter registration centers have been assigned to electoral districts. Therefore, a person is assigned to the same electoral district of the center where he or she registered.

The final roll of registrants (after the Exhibition Exercise) is displayed.

Data Sources:
 2017 National Voter Registration Exercise- National Elections Commission
 2009-2010 Administrative Boundary & Locality Revalidation Project - Inter-Agency Taskforce on Delimitation (IATD: MIA, MLME, NEC, LISGIS)
 2007 National Geographic Planning - Liberia Institute of Statistics & Geo-Information Services (LISGIS)
 2006-2007 Boundary Harmonization Exercise - Special Joint Stakeholders Collaborative Committee (SJSCC)

Scale: 1:200,000
 Map Projection: UTM Zone 29N
 Datum: WGS 84
 Unit: Meter



Prepared & Printed By:
 National Elections Commission GIS Section
 Production Date: 29 November 2020

