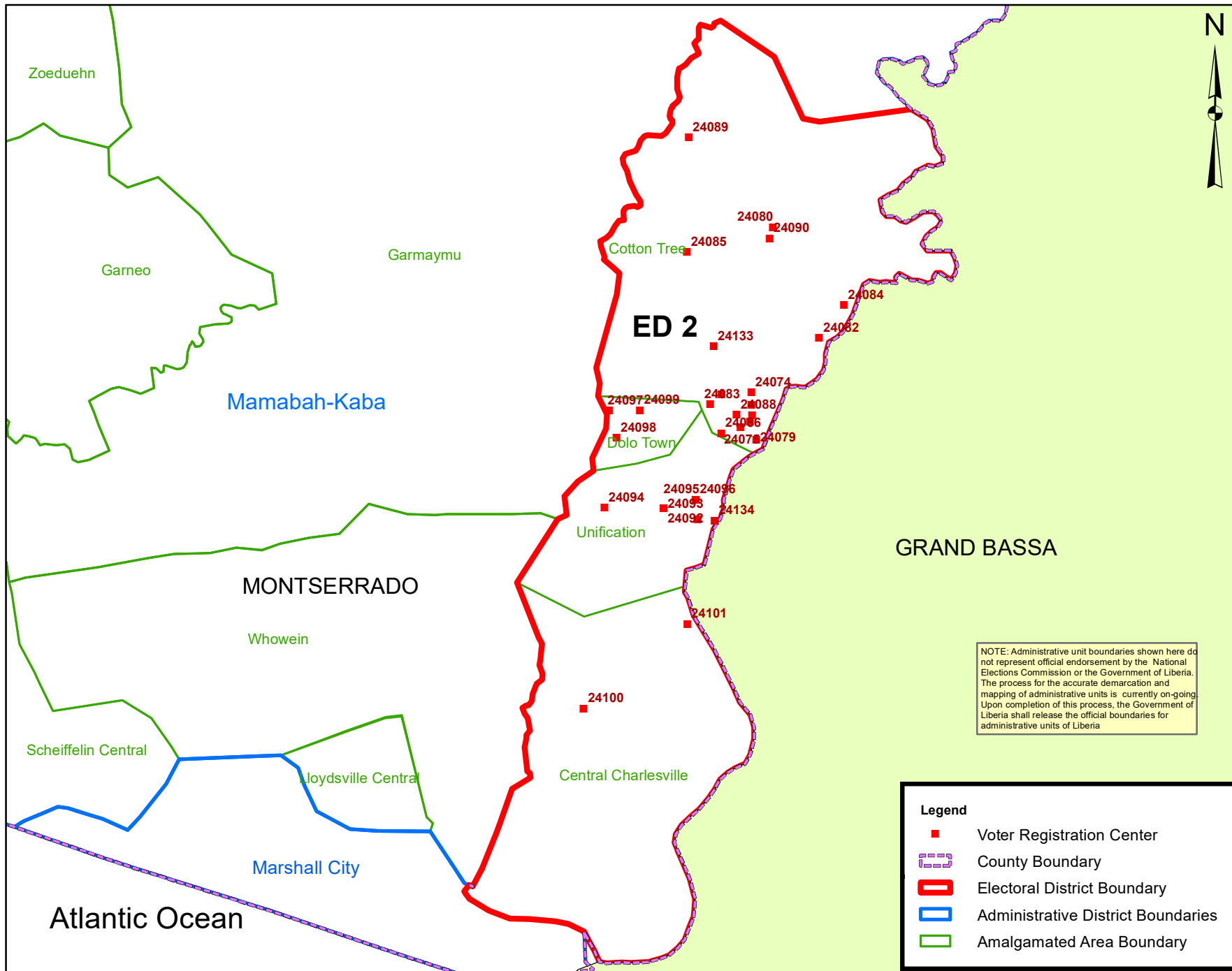


Margibi County Electoral District No. 2 2020



Voter Registration Centers		
VRC Code	Center Name	Total Registrants
24074	Cotton Tree Community School	2313
24075	Hydro Community School	456
24077	Bethel World Outreach Church	1085
24078	Division 45 Offshore	864
24079	Division 45 Dennisville Palava Hut	1169
24080	Division 44 Walker School	1168
24081	Central Cotton Tree Gas Station	1949
24082	Barclay's Farm School	2543
24083	Harbel Multilateral Community School	1456
24084	Poinea Palava Hut	166
24085	Division 44 Pinco Camp Palava Hut	350
24086	Harbel Garden School	1696
24087	Harbel Grove Palava hut	1360
24088	Harbel Field House	1652
24089	Division 42 Sugar Hill office	273
24090	Cotton Tree Palava Hut	2541
24091	R I A Terminal	1055
24092	R.S. Caulfield School	1629
24093	St. Paul Ecumenical High School	2039
24094	Joe Blow Town Palava Hut	1011
24095	Clipper Camp 1	1101
24096	Clipper Camp 2	1652
24097	Dolo Town Community School	2197
24098	Mother of Jesus Christ Catholic School	2554
24099	Peter Town Jr. High School	1048
24100	Charlesville Public School	1207
24101	Exchem Compound	672
24133	Esther T. Jacob School	1198
24134	RIA Township Public School	751
Total Registrants (After Exhibition)		39,155

NOTE: Administrative unit boundaries shown here do not represent official endorsement by the National Elections Commission or the Government of Liberia. The process for the accurate demarcation and mapping of administrative units is currently on-going. Upon completion of this process, the Government of Liberia shall release the official boundaries for administrative units of Liberia

Legend

- Voter Registration Center
- County Boundary
- Electoral District Boundary
- Administrative District Boundaries
- Amalgamated Area Boundary

Voter registration centers have been assigned to electoral districts. Therefore, a person is assigned to the same electoral district of the center where he or she registered.

The final roll of registrants (after the Exhibition Exercise) is displayed.

Data Sources:
 2017 National Voter Registration Exercise- National Elections Commission
 2009-2010 Administrative Boundary & Locality Revalidation Project - Inter-Agency Taskforce on Delimitation (IATD: MIA, MLME, NEC, LISGIS)
 2007 National Geographic Planning - Liberia Institute of Statistics & Geo-Information Services (LISGIS)
 2006-2007 Boundary Harmonization Exercise - Special Joint Stakeholders Collaborative Committee (SJSCC)



Scale: 1:135,000
 Map Projection: UTM Zone 29N
 Datum: WGS 84
 Unit: Meter



Prepared & Printed By:
 National Elections Commission GIS Section
 Production 29 November 2020