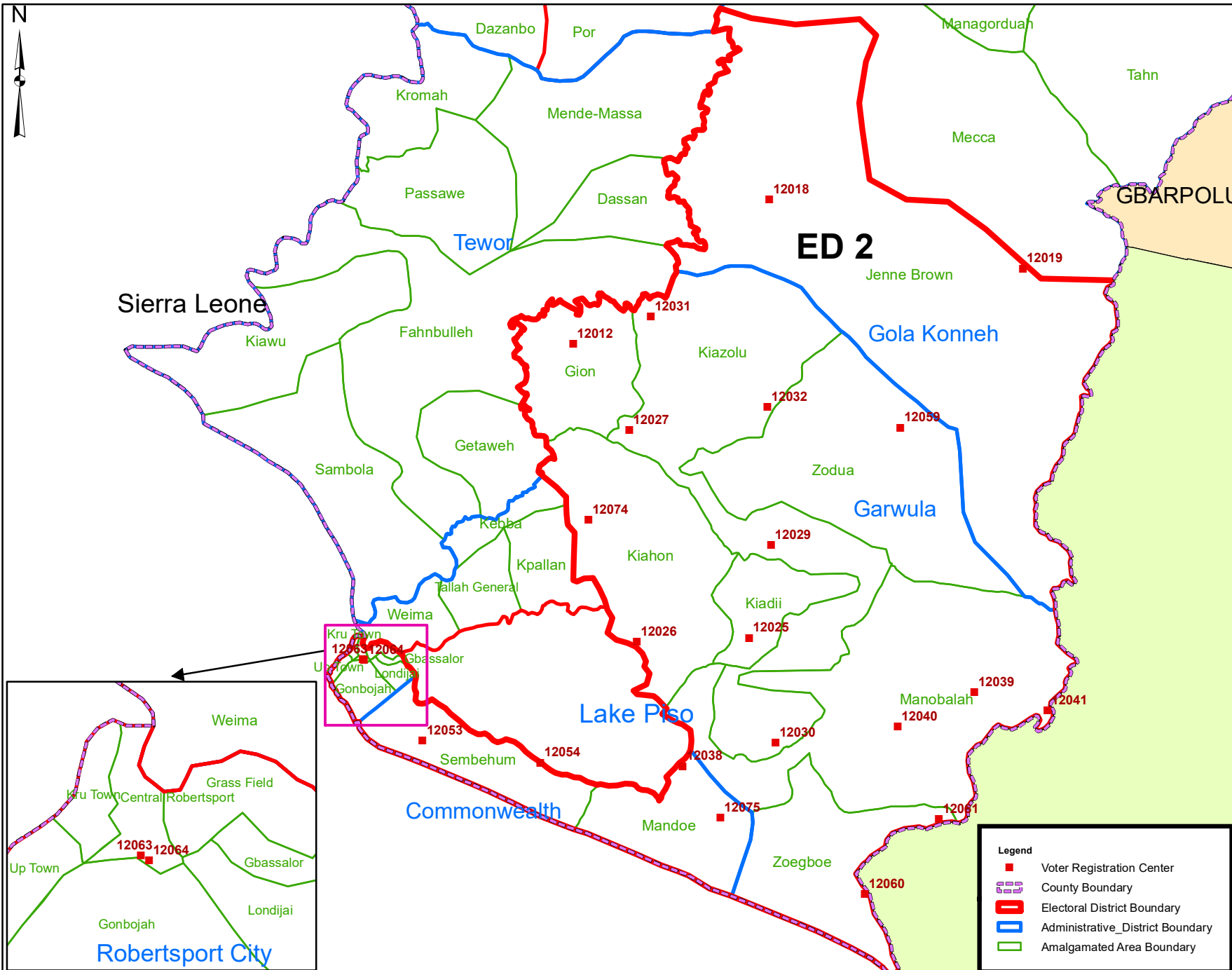


# Grand Cape Mount County Electoral District No. 2 2020



Voter Registration Centers		
VRC Code	Center Name	Total Registrants
12012	Kpeneji Town Hall	773
12018	King Jor Town Hall	2767
12019	Jenne Brown Public School	1362
12025	Vonzula Public School	1757
12026	Bendu Public School	588
12027	Daniel Town Hall	1603
12029	Sinje Public School	2519
12030	Jundu Town Hall	933
12031	Mecca Community School	383
12032	Zaway Public School	386
12038	Mandoe Palava Hut	370
12039	Konja Town Hall	2069
12040	Mandina Public School	1794
12041	Gbah Foboi Public School	2569
12053	Sembehum Public School	423
12054	Latia Public School	554
12059	Kanga Public School	884
12060	Bomboja Public School	603
12061	Senii Town Hall	646
12063	Robertsport High School	1310
12064	Islamic Model	1620
12074	Dasalamu Public School	578
12075	Tombey Public School	418
<b>Total Registrants (After Exhibition)</b>		<b>26,909</b>

Voter registration centers have been assigned to electoral districts. Therefore, a person is assigned to the same electoral district of the center where he or she registered.

The final roll of registrants (after the Exhibition Exercise) is displayed.

Data Sources:  
 2017 National Voter Registration Exercise- National Elections Commission  
 2009-2010 Administrative Boundary & Locality Revalidation Project - Inter-Agency Taskforce on Delimitation (IATD: MIA, MLME, NEC, LISGIS)  
 2007 National Geographic Planning - Liberia Institute of Statistics & Geo-Information Services (LISGIS)  
 2006-2007 Boundary Harmonization Exercise - Special Joint Stakeholders Collaborative Committee (SJSCC)



Scale: 1:625,000  
 Map Projection: UTM Zone 29N  
 Datum: WGS 84  
 Unit: Meter



Prepared & Printed By:  
 National Elections Commission GIS Section  
 Production 29 November 2020