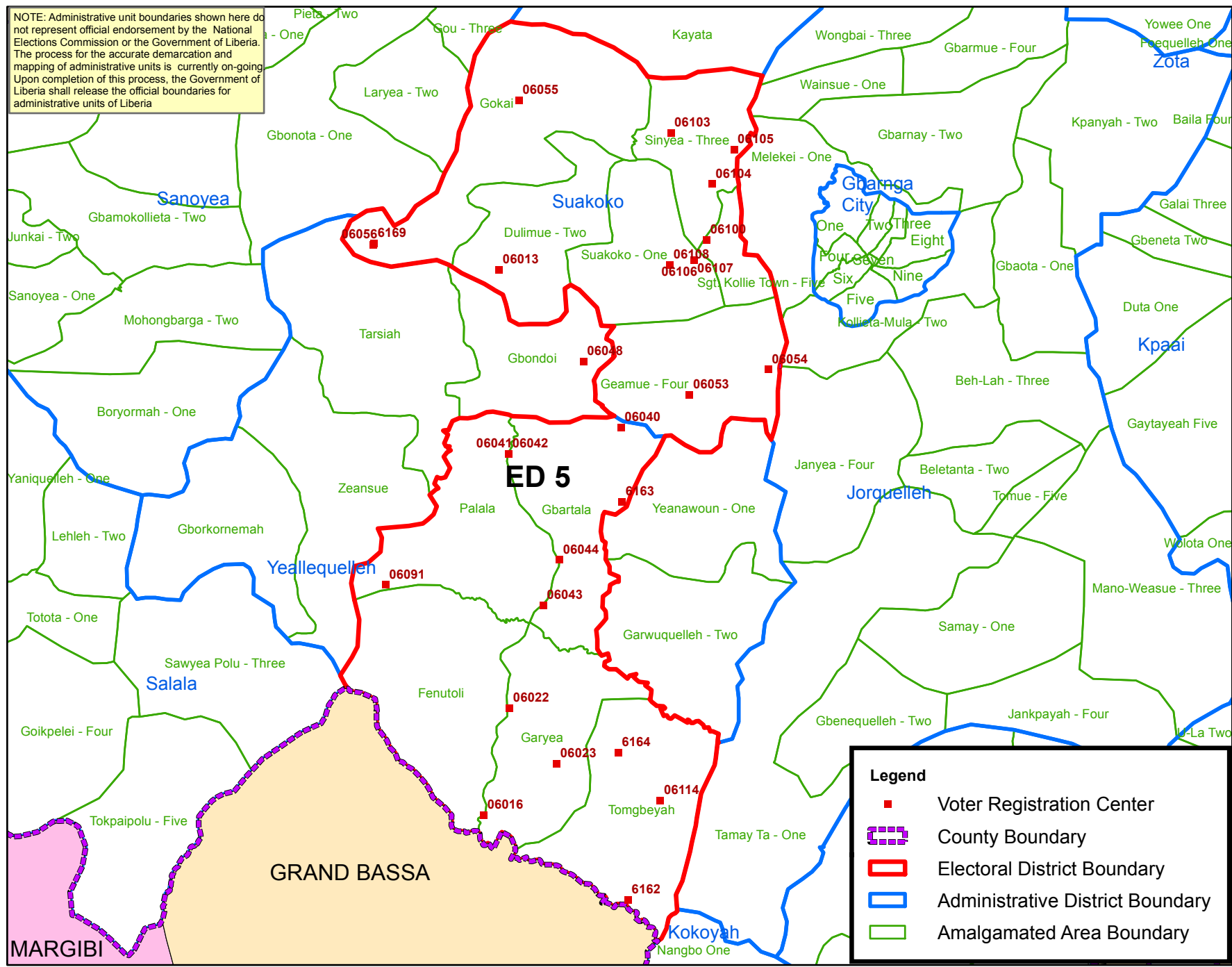


NOTE: Administrative unit boundaries shown here do not represent official endorsement by the National Elections Commission or the Government of Liberia. The process for the accurate demarcation and mapping of administrative units is currently on-going. Upon completion of this process, the Government of Liberia shall release the official boundaries for administrative units of Liberia

Bong County Electoral Districts No.5 2017



Voter Registration Centers		
VRC Code	Center Name	Total Registrant
6013	Gleannasiasue palava Hut	1,327
6016	Juah Mannah Elem. School	677
6022	Garyea Public School	1,275
6023	Dweyaeapolu Palava Hut	180
6040	Tumata Palava Hut	751
6041	David Fajue School	2,379
6042	David Fajue School	2,182
6043	Voloblai palava Hut	992
6044	Taylor-ta Palava Hut	1,648
6053	Guermue Public School	988
6054	Gwenimah Methodist School	891
6055	Gokai Public School	958
6056	Ganla Town Hall	393
6091	Palala Palava Hut	491
6100	Sergeant Kollie Town Market	2,087
6101	Phebe Community	2,106
6103	Balamah Town Hall	1,282
6104	Cuttington University	1,411
6105	G.W. Gibson School	1,702
6106	Suakoko Center High	936
6107	Suakoko Center High	827
6108	Flomo Wannah Elem. School	2,727
6114	Glenkormah Palava Hut	497
6162	Kornie Palava Hut	525
6163	Gwilly Palava Hut	541
6164	Joakai Palava Hut	304
6169	Gbarla Public School	601
Total Registrants (After Exhibition)		30,678

Legend

- Voter Registration Center
- ▭ County Boundary
- ▭ Electoral District Boundary
- ▭ Administrative District Boundary
- ▭ Amalgamated Area Boundary

Voter registration centers have been assigned to electoral districts. Therefore, a person is assigned to the same electoral district of the center where he or she registered.

The final roll of registrants (after the Exhibition Exercise) is displayed.

Data Sources:
 2017 National Voter Registration Exercise- National Elections Commissions
 2009-2010 Administrative Boundary & Locality Revalidation Project - Inter-Agency Taskforce on Delimitation (IATD: MIA, MLME, NEC, LISGIS)
 2007 National Geographic Planning - Liberia Institute of Statistics & Geo-Information Services (LISGIS)
 2006-2007 Boundary Harmonization Exercise - Special Joint Stakeholders Collaborative Committee (SJSCC)



Scale: 1:700,000
 Map Projection: UTM Zone 29N
 Datum: WGS 84
 Unit: Meter



Prepared & Printed By:
 National Elections Commission
 Production Date: 27 September 2017