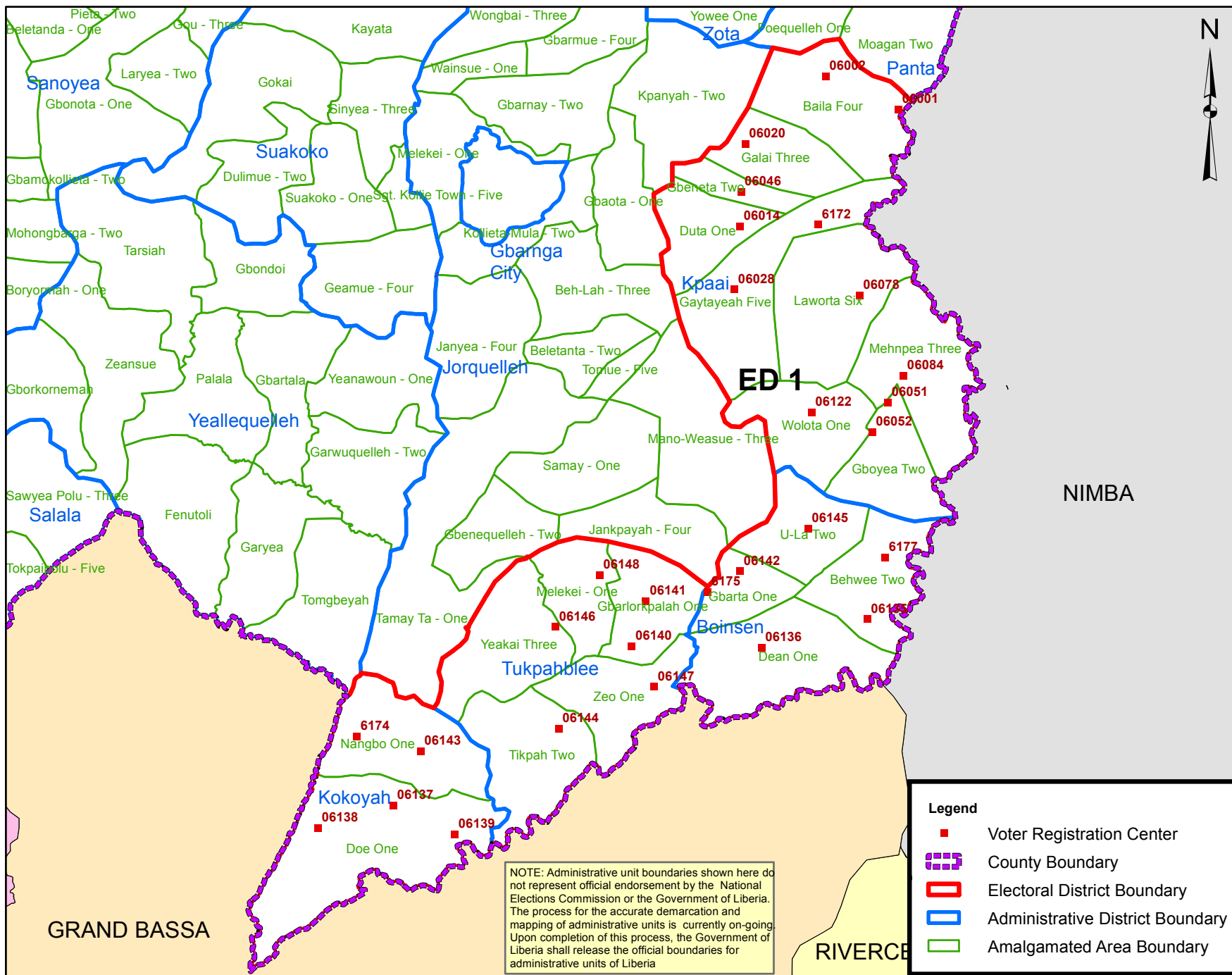


Bong County Electoral Districts No.1 2017



Voter Registration Centers		
VRC Code	Center Name	Total Registrants
6001	Baila Public School	1,244
6002	Sarworlor Public School	800
6014	Duta Town Hall	1,342
6020	Galai Public School	1,147
6028	Tarsai Palava Hut	968
6046	Palala Public School	2,676
6051	Green Hill Quarry Public School	609
6052	Zowienta Public School	2,716
6078	Zeby Public School	1,593
6084	Yoepa Palava Hut	1,222
6122	Dahn-Kan Palava Hut	1,167
6135	Yolota Palava Hut	994
6136	Gold Camp Palava Hut	3,007
6137	Doe Public School	518
6138	Gbelletay Palava Hut	300
6139	Rock Crusher Palava Hut	963
6140	Botota Public School	1,083
6141	Gbalorkpala Public School	845
6142	Old Gbarta Palava Hut	959
6143	Nangbo Palava Hut	453
6144	Tokpa-Ta Public School	1,017
6145	U-Lah Public School	1,128
6146	Gbecohn Public School	1,753
6147	Zeo Palava Hut	356
6148	Malonkai Palava Hut	456
6172	Kpaai Public School	932
6174	Fohr Palava Hut	248
6175	Christ Disciple Baptist Hall	497
6177	Behwee Public School	611
Total Registrants (After Exhibition)		31,604

Legend

- Voter Registration Center
- County Boundary
- Electoral District Boundary
- Administrative District Boundary
- Amalgamated Area Boundary

NOTE: Administrative unit boundaries shown here do not represent official endorsement by the National Elections Commission or the Government of Liberia. The process for the accurate demarcation and mapping of administrative units is currently on-going. Upon completion of this process, the Government of Liberia shall release the official boundaries for administrative units of Liberia

Voter registration centers have been assigned to electoral districts. Therefore, a person is assigned to the same electoral district of the center where he or she registered.

The final roll of registrants (after the Exhibition Exercise) is displayed.

Data Sources:
 2017 National Voter Registration Exercise- National Elections Commissions
 2009-2010 Administrative Boundary & Locality Revalidation Project - Inter-Agency Taskforce on Delimitation (IATD: MIA, MLME, NEC, LISGIS)
 2007 National Geographic Planning - Liberia Institute of Statistics & Geo-Information Services (LISGIS)
 2006-2007 Boundary Harmonization Exercise - Special Joint Stakeholders Collaborative Committee (SJSACC)



Scale: 1:700,000
 Map Projection: UTM Zone 29N
 Datum: WGS 84
 Unit: Meter

